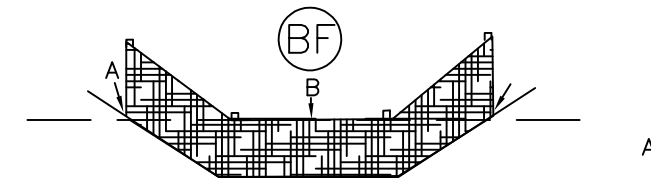
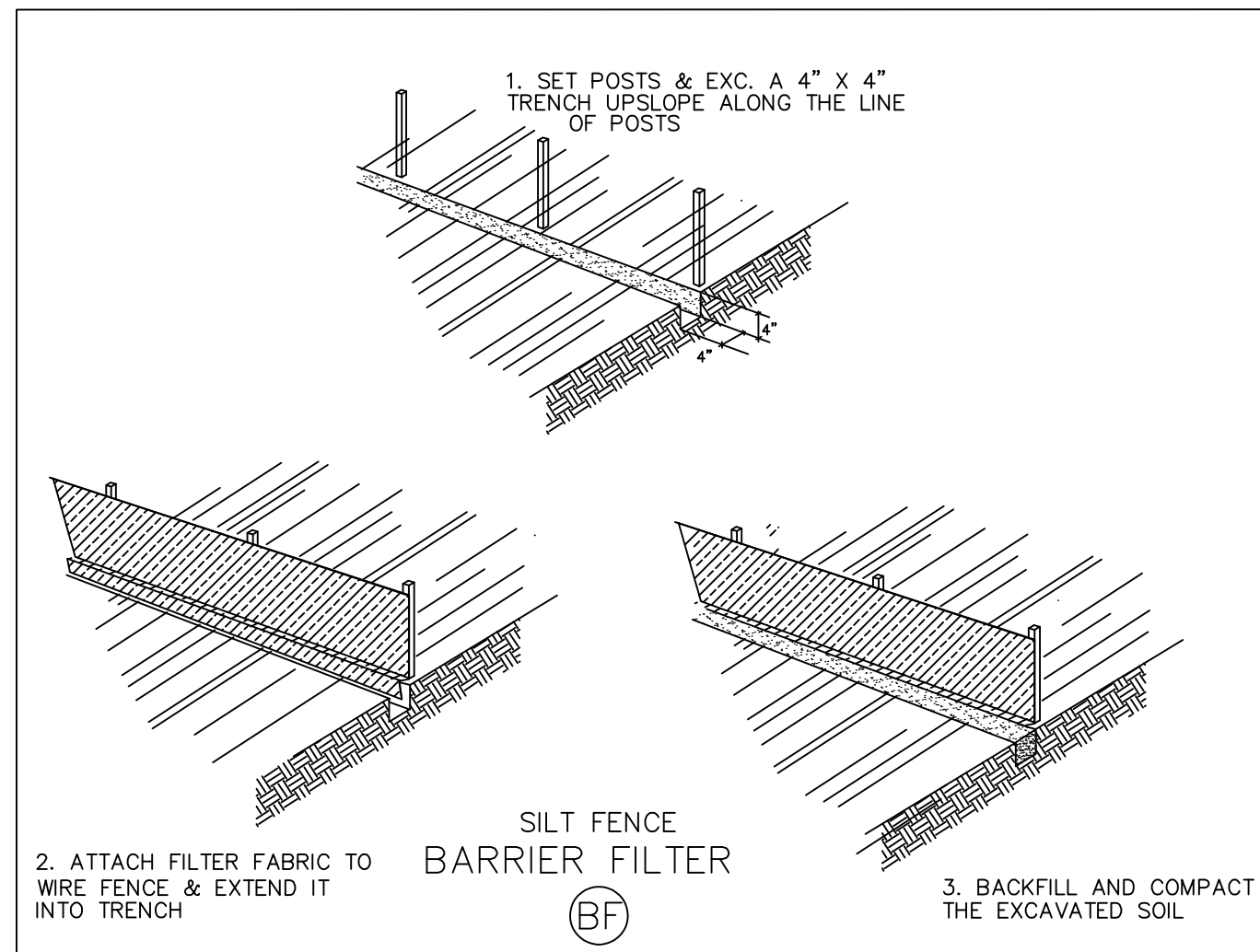
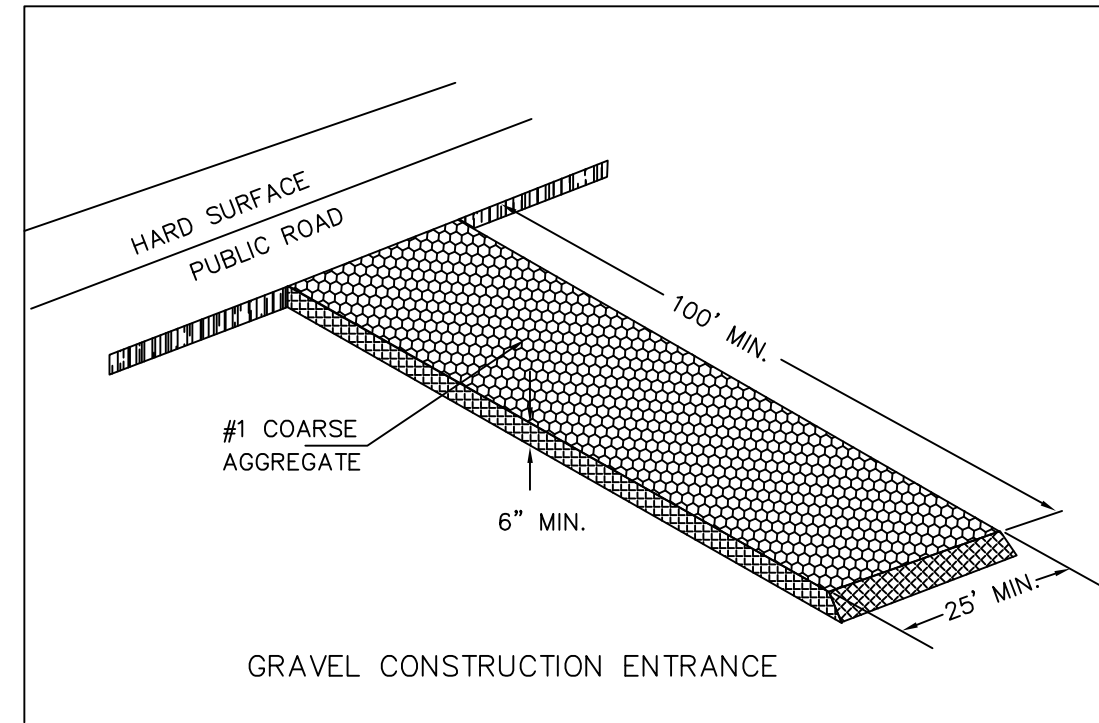


# SOIL PROTECTION CHART

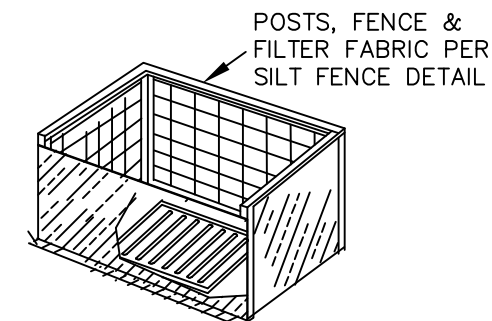
STABILIZATION TYPE	JAN	FEB	MAR	APR	MAY	JUN	JUL	AUG	SEP	OCT	NOV	DEC
PERMANENT SEEDING			A			*	*	*	*			
DORMANT SEEDING	B										B	
TEMPORARY SEEDING			C			D						
SODDING		E **										
MULCHING	F											

- A. KENTUCKY BLUEGRASS 90 LBS/AC MIXED WITH PERENNIAL RYEGRASS 30 LBS/AC
- B. KENTUCKY BLUEGRASS 135 LBS/AC MIXED WITH PERENNIAL RYEGRASS 45 LBS/AC + STRAW MULCH 2 TONS/AC.
- C. SPRING DATE 100 LBS/AC.
- D. WHEAT OR CEREAL RYE 150 LBS/AC.
- E. SOD
- F. STRAW MULCH 2 TONS/AC.

\* IRRIGATION NEEDED DURING JUN, JUL, AUG & SEP.  
 \*\* IRRIGATION NEEDED FOR 2-3 WEEKS AFTER SODDING



PROPER PLACEMENT OF A BARRIER IN A DRAINAGE WAY  
 BARRIER PLACEMENT EVERY 60'  
 POINTS "A" SHOULD BE HIGHER THAN POINT "B"



THIS APPLICATION IS APPLICABLE  
 THE INLET DRAINS A FLAT AREA (< 5%)  
 WHERE FLOW IS < .5 C.F.S

INLET PROTECTION (IP)

REV No.	DATE	BY	DESCRIPTION
1	1/10/04	DAH	General Revisions - Re-Issued

CITY OF WESTLAKE, OHIO  
 DEPARTMENT OF ENGINEERING

## EROSION & SEDIMENTATION DETAILS

SCALE: AS NOTED

DATE: DRWN BY: