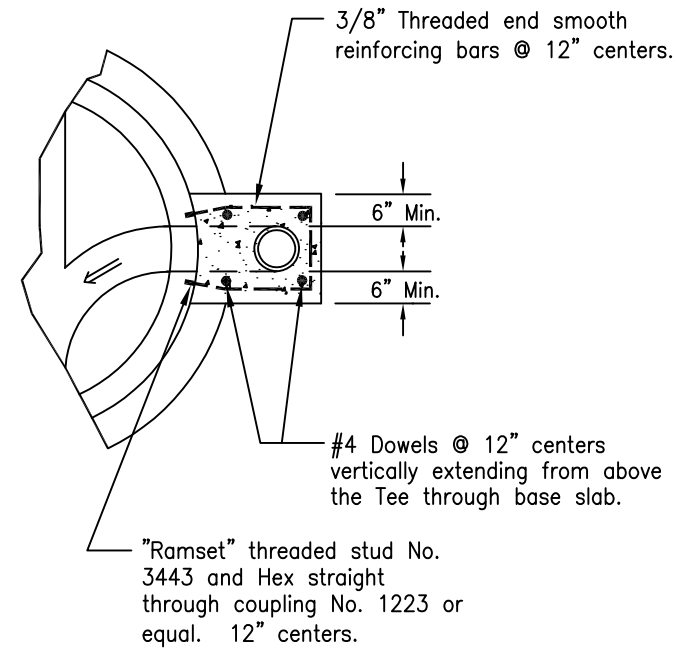
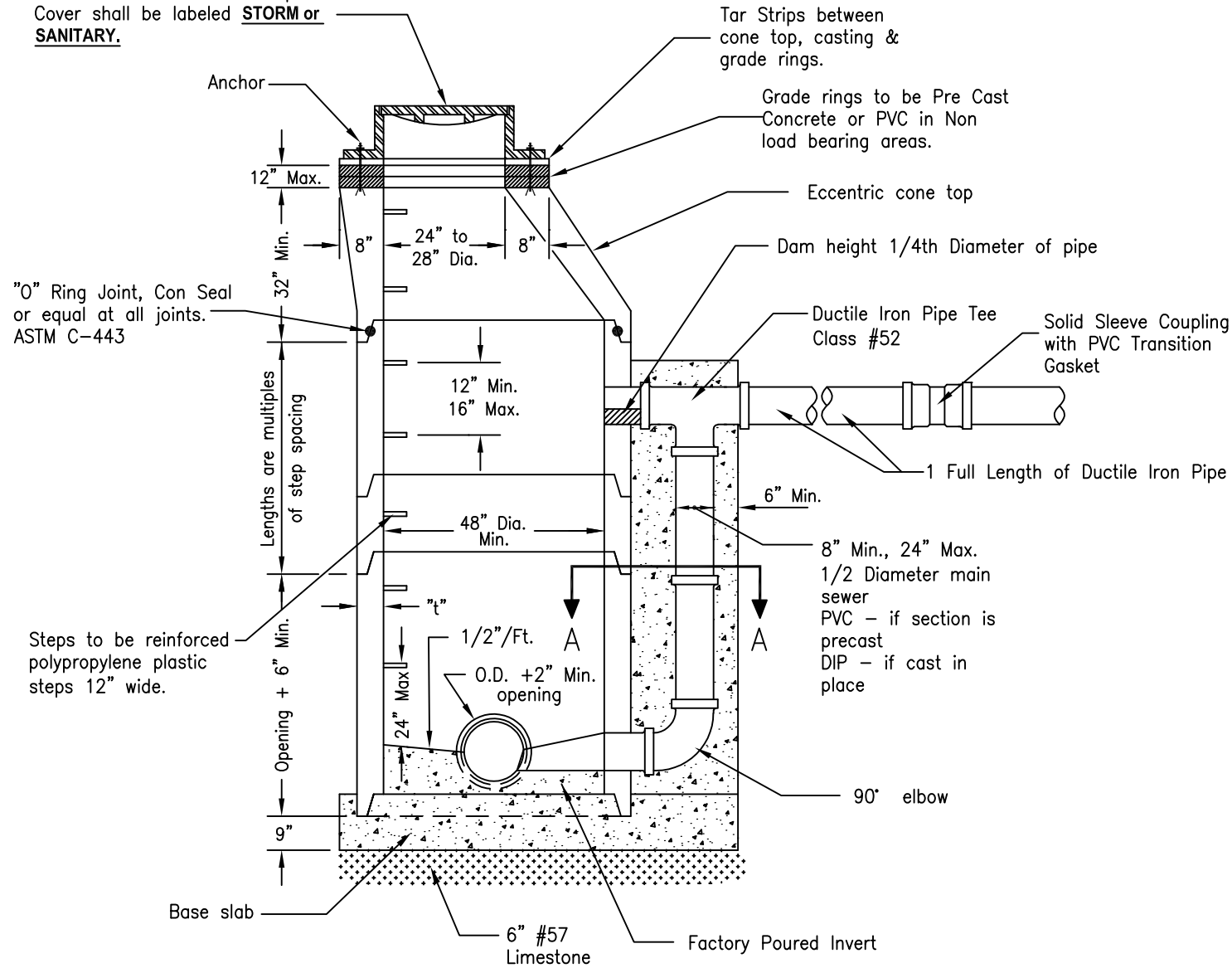
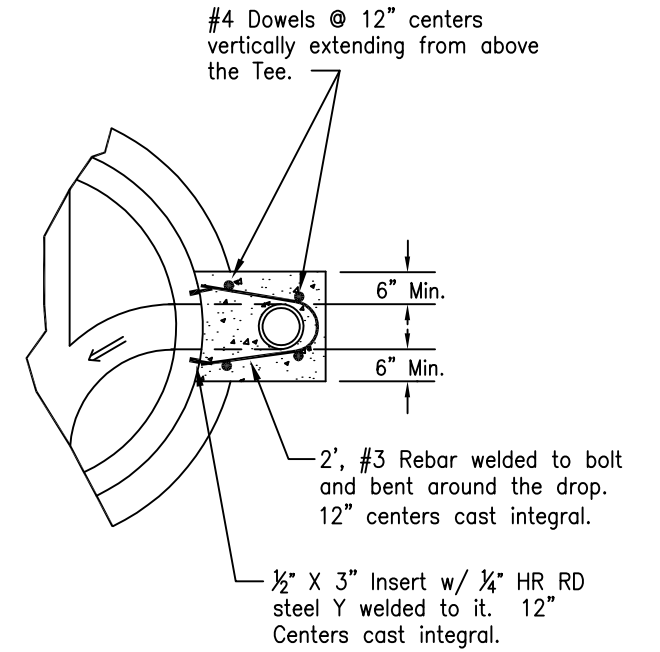


Frame and cover as specified
East Jordan No. 1715 or equal.
Cover shall be labeled **STORM** or
SANITARY.



CAST IN PLACE
SECTION A - A



PRE-CAST
SECTION A - A

Notes:

A drop manhole shall be constructed in sewers when the distance between the inverts is 24" or greater.

The following notes on the Precast Concrete Manholes shall pertain to the Drop Manhole: Top or Transition Openings in riser sections, Joint Seal, Materials and Landing Platforms.

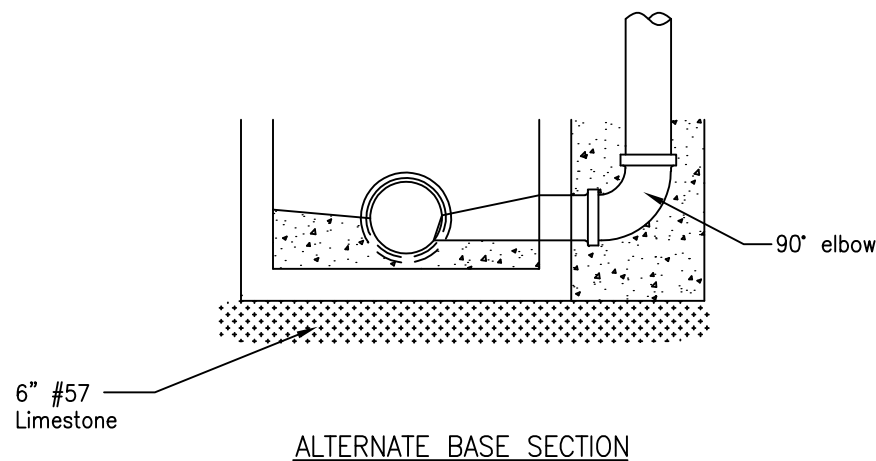
Poured in place concrete shall be 4000# concrete.

ANCHORS 1/2" dia. Allthread with washers and hex nut (Min 4). Lead anchor secured into the eccentric cone top.

CASTINGS for manholes shall be cleaned and painted in field with one coat of asphalt varnish or coal tar pitch paint.

48" - 96" BASE FOR PRECAST

Base I.D.	Min "t"	Max. Pipe Size
48"	5"	30"
60"	5"	36"
72"	6"	48"
84"	7"	54"
90"	7-1/2"	60"
96"	8"	60"



Sanitary Manholes

Manhole shall be waterproofed with coal tar epoxy coating from invert to 4' above invert. Castings in pavement shall be solid lid and gasketed.

Manhole Testing

All sanitary manholes shall be vacuum tested per ASTM C 1244.

REV No.	DATE	BY	DESCRIPTION
1	2/17/04	DAH	General Revisions - Re-issue
CITY OF WESTLAKE, OHIO DEPARTMENT OF ENGINEERING			
PRECAST CONCRETE DROP MANHOLE			
SCALE: AS NOTED			2
DATE:		DRWN BY:	