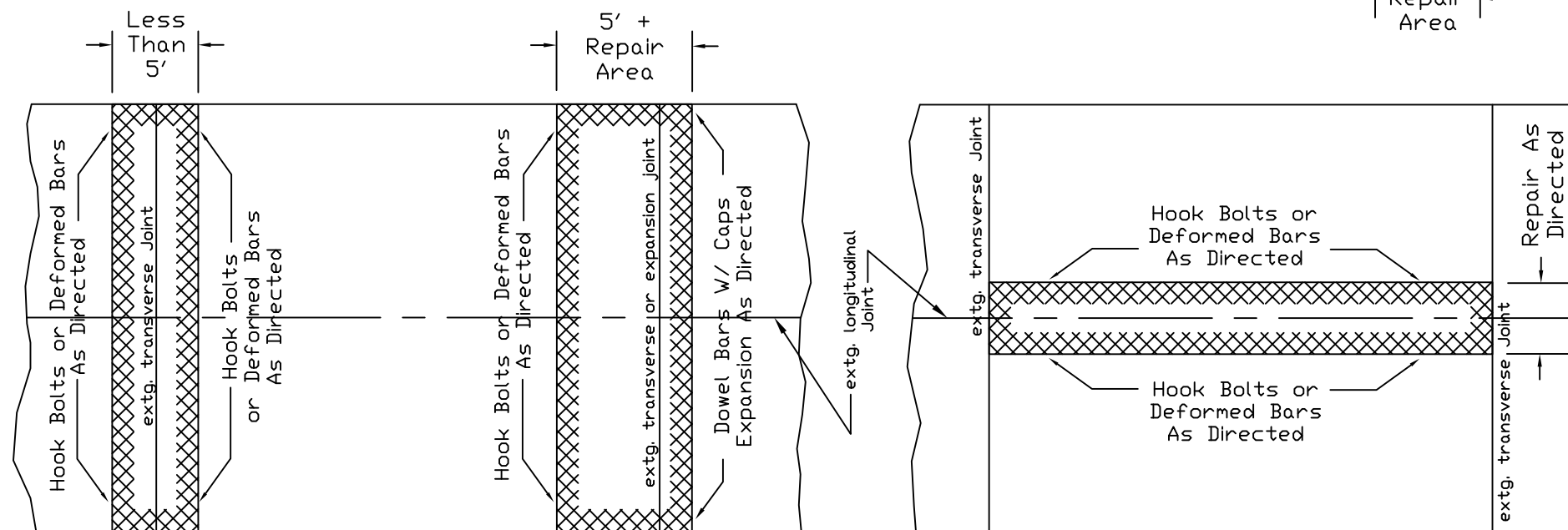
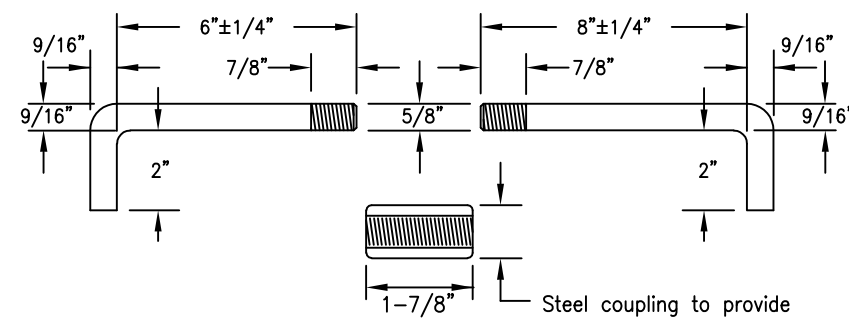


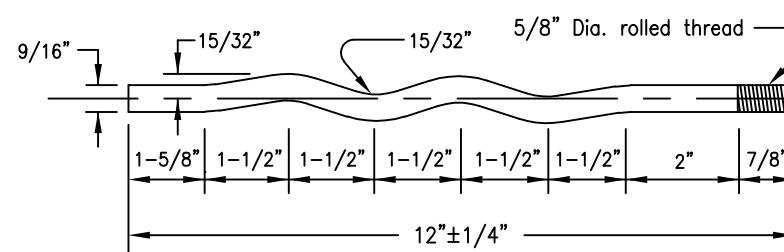
DEFORMED BAR
May Be Used In Lieu of Hook Bolt



JOINT REPAIRS



HOOK BOLT



HOOK BOLT ALTERNATE

Notes:

- 1) The intent of this detail is to indicate the probable installation for hook bolts, deformed bars or dowel bars. Variations of these details may be required as directed by the Director of Engineering. Where complete pavement slabs are removed, dowel bars will be installed on both sides of the repair, as directed by the Engineer.
- 2) Where multiple slabs are replaced, epoxy coated dowel baskets, the size determined by the pavement thickness, will be placed in line with the adjacent slab joint pattern.
- 3) Removal of the entire slab is required when the area of repair falls within 5' of an existing joint, unless otherwise directed by the Engineer.
- 4) All new joints are to be tooled and crack filled when completed.
- 5) Spacing of all hook bolts, deformed bars and dowel bars will be as required on detail sheet 16a.
- 6) Hook bolt inserts shall be turned to a tight fit when installed in threaded hook bolts or couplings.
- 7) Tie bars, hook bolt assemblies and hook bolt alternate shall have a minimum strength of 11,000 pounds.

REV No.	DATE	BY	DESCRIPTION
CITY OF WESTLAKE, OHIO DEPARTMENT OF ENGINEERING			
RIGID PAVEMENT JOINT REPAIR DETAILS			
SCALE: NTS			16b
DATE: 1/13/04		DRWN BY:	