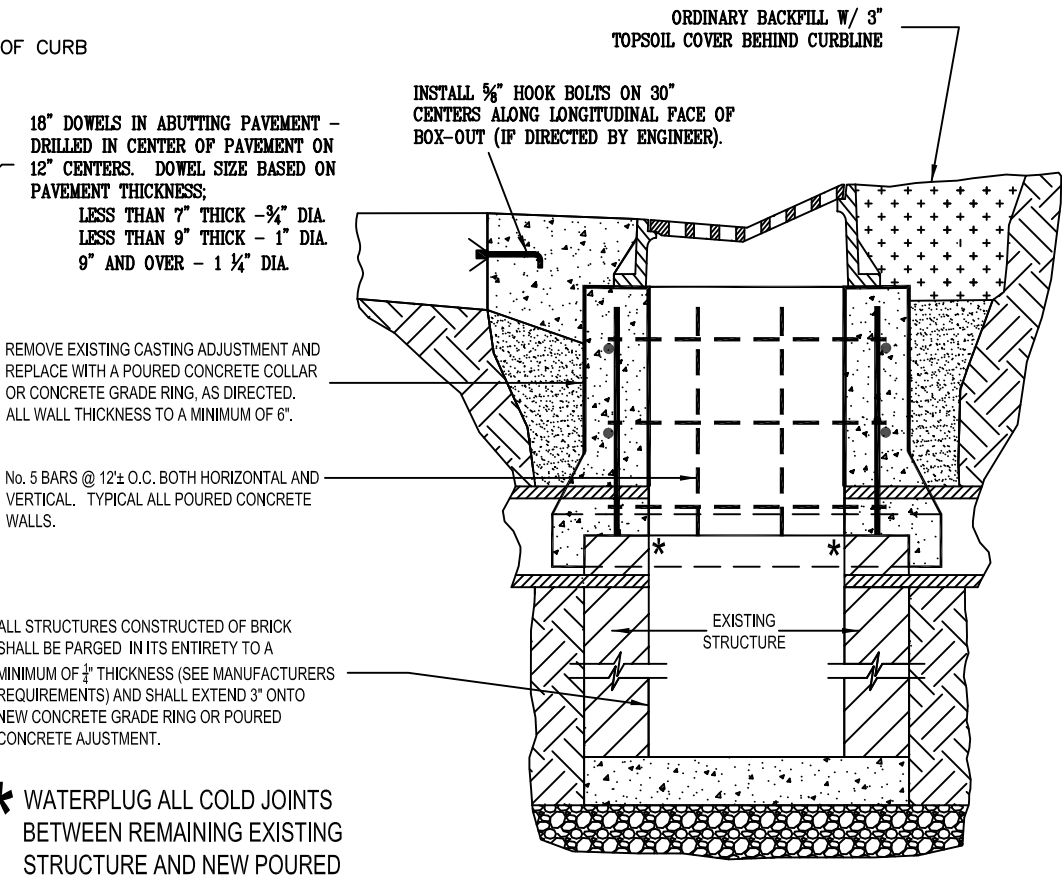


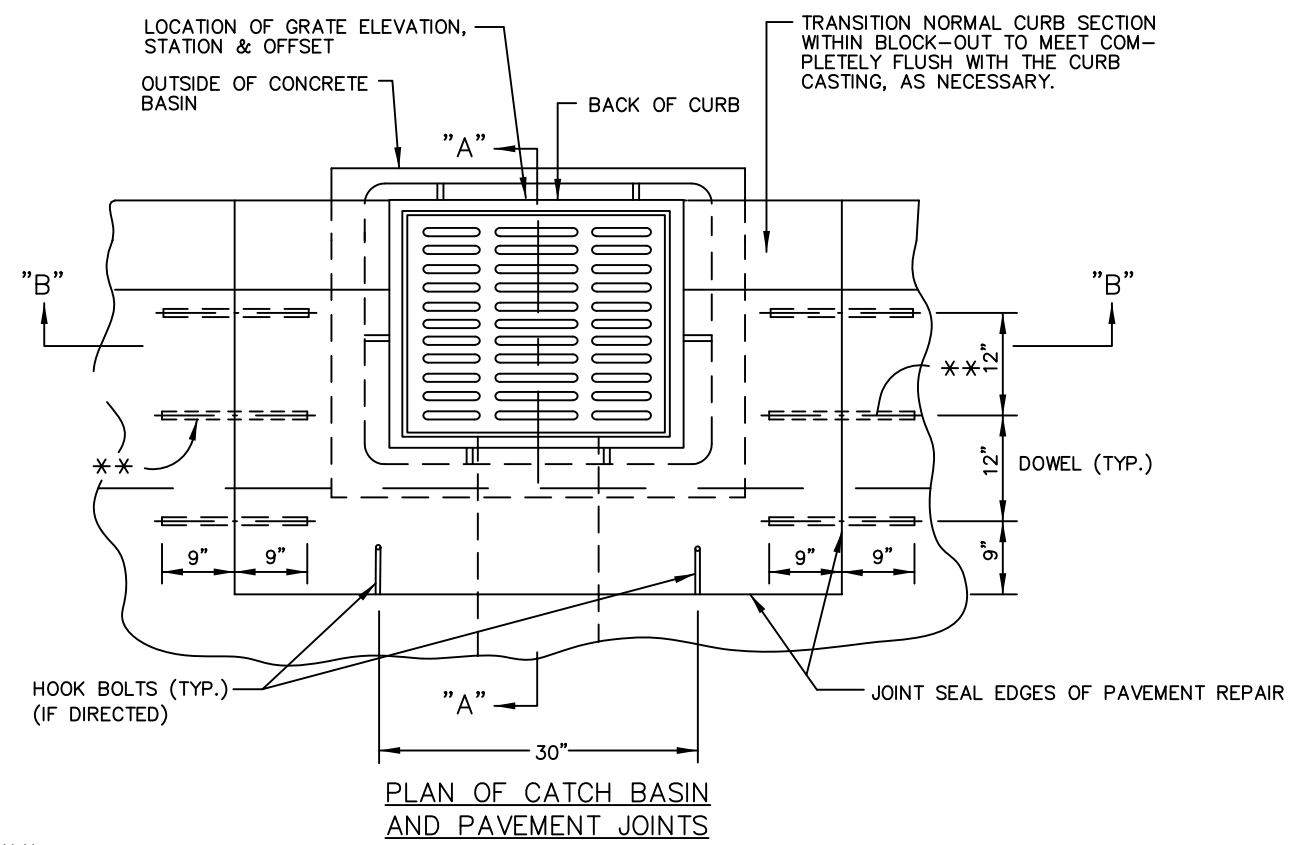
SECTION "B-B"



SECTION "A-A"

NOTES

- 1.) CASTINGS SHALL BE REMOVED FROM THE STRUCTURE AND THOROUGHLY CLEANED OF CONCRETE / FOREIGN MATERIAL. CASTINGS ARE TO BE RESET ON NEW ADJUSTMENT WITH THEIR BASE FULLY AND EVENLY SUPPORTED BY THE ADJUSTMENT. DAMAGED CASTINGS WILL BE REPLACED AT THE DIRECTION OF ENGINEER UNDER MISC. METAL. CASTINGS DAMAGED BY THE CONTRACTOR WILL BE REPLACED AT NO ADDITIONAL COST TO THE CITY.
- 2.) EXISTING STRUCTURE SHALL BE REMOVED TO SOLID STRUCTURE OR TO SPRINGLINE OF DEEPEST PIPE, WHICHEVER IS DEEPER.
- 3.) RECONSTRUCTED STRUCTURE USING THE SALVAGED CASTING, RECONSTRUCT THE STRUCTURE TO THE NEW GRADE, CONFORMING AS NEARLY AS PRACTICABLE TO THE EXISTING DIMENSION USING BRICK.
- 5.) PAVEMENT REPAIR LIMITS WILL BE MARKED BY THE ENGINEER.
- 6.) DOWELS: 18" LONG, EPOXY COATED DOWELS ARE REQUIRED FOR USE ON 12" CENTERS ALONG TRANSVERSE FACES OF BOX-OUTS. DOWEL DIAMETER DEPENDENT ON THICKNESS OF ABUTTING PAVEMENT.
- 7.) HOOK BOLTS: 5/8" HOOK BOLTS, OR CITY APPROVED REPLACEMENT PER CITY DETAIL, ARE TO BE PLACED ON 30" CENTERS ALONG LONGITUDINAL FACE OF BOX-OUT IN CENTER OF ABUTTING CONCRETE. IF THEIR INSTALLATION IS DIRECTED BY THE ENGINEER.
- 8.) FLOWABLE FILL LOW STRENGTH MORTAR MIX OF 100 LBS. CEMENT / YD. SHALL BE POURED OUTSIDE OF STRUCTURE FROM BELOW BOTTOM OF BRICK TO A THICKENED PAVEMENT EDGE AROUND STRUCTURE AND BOTTOM OF ABUTTING PAVEMENT.
- 9.) CONCRETE MS, AIR-ENTRAINED CONCRETE (6% +/- 2%) SHALL BE POURED IN THICKENED PAVEMENT REPAIR ATOP CURED BASE OF FLOWABLE FILL.



PLAN OF CATCH BASIN AND PAVEMENT JOINTS

** DOWEL LOCATION FOR CURB AND GUTTER

2	1/18/19	MAC	General Revisions (Re-Issue)
1	8/12	DAH	General Revisions (Re-Issue)
REV No.	DATE	BY	DESCRIPTION

CITY OF WESTLAKE, OHIO
DEPARTMENT OF ENGINEERING

CATCH BASIN RECONSTRUCT

SCALE: AS NOTED

DATE: DRWN BY:

X:\Caddrawings\Const Details\Cad-2012\018