

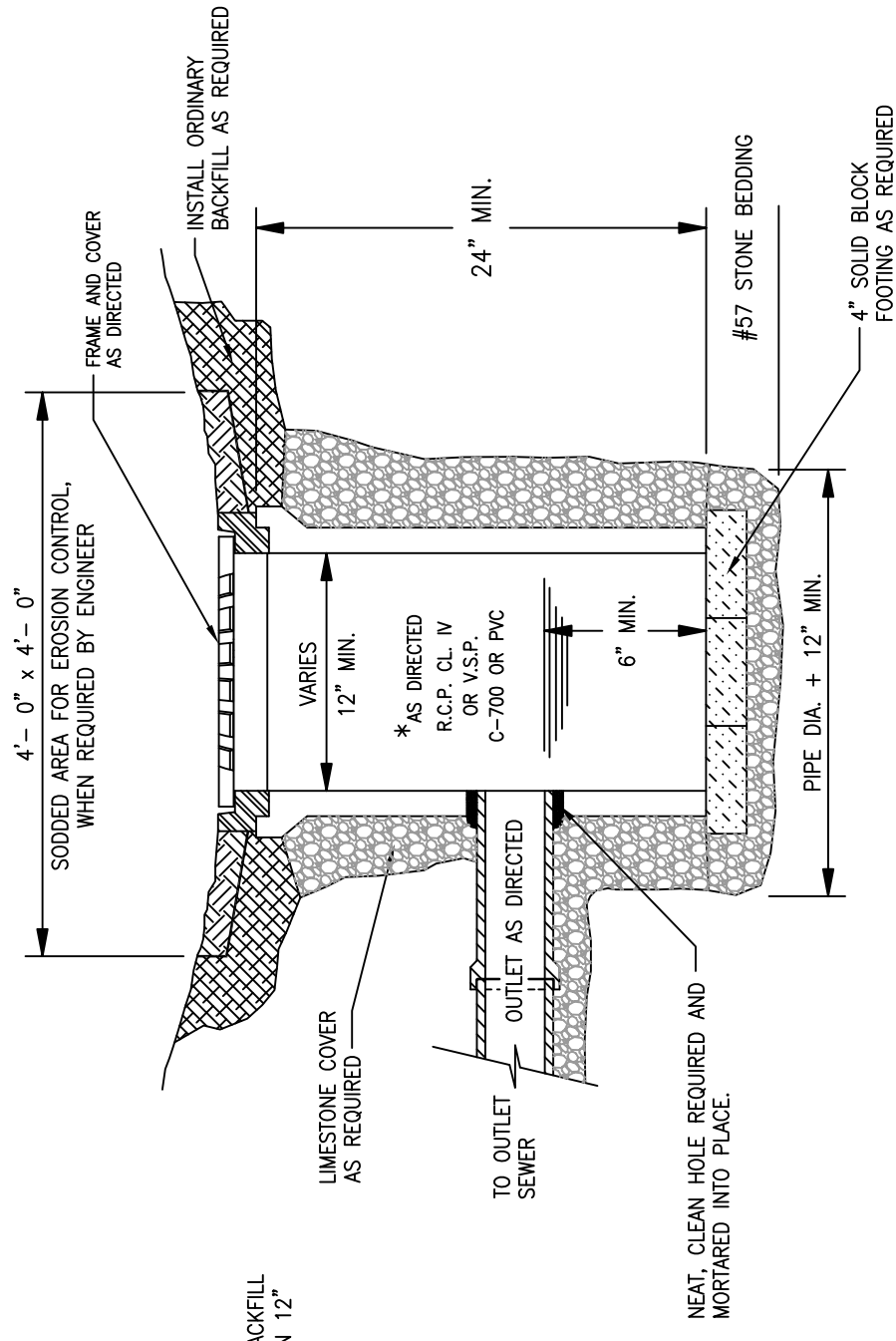
## ROADSIDE INLET

### Notes:

Backfill for all structures within 5' of the pavement shall be Low Strength Mortar Backfill, TYPE 2 per current O.D.O.T. Construction and Material Specifications, except as modified herein.

The use of Foundry Sand is strictly prohibited.

The contractor is required to submit a mix design, for City Approval, a minimum of 48 hours prior to the installation of the backfill.



## YARD INLET

### GENERAL AREA

\*  
PIPE SIZE AS DIRECTED BY THE ENGINEER  
(MINIMUM 12")

CATALOG No.	
**	**
EAST JORDAN	NEENAH
6532	R-4340-H
6533	R-4340-G
6534	R-4340-F1
6536	R-4340-F
	R-4030-12
	R-4030-15
	R-4030-18
	R-4030-24
	PIPE SIZE

**FILTER FABRIC WILL BE INSTALLED IN ALL INLETS UNTIL GRASS ADJACENT TO THE INLET IS ESTABLISHED.**

OTHER CASTINGS ACCEPTED UPON APPROVAL OF THE ENGINEER

\*\* INDICATES FLAT GRATE CATALOG No.

REV No.	DATE	BY	DESCRIPTION
3	9/12	DAH	General Revisions - Re-Issue
2	1/12/04	DAH	General Revisions - Re-Issue
1	10/9/01	DAH	FLAT CASTING ADDITIONS & AS DIRECTED STONE BASE

CITY OF WESTLAKE, OHIO  
DEPARTMENT OF ENGINEERING

## INLET DETAILS

SCALE: AS NOTED

DATE: DRWN BY:

24