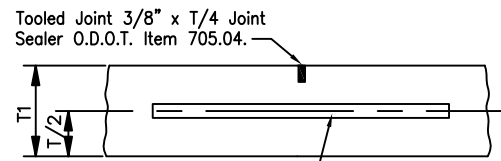


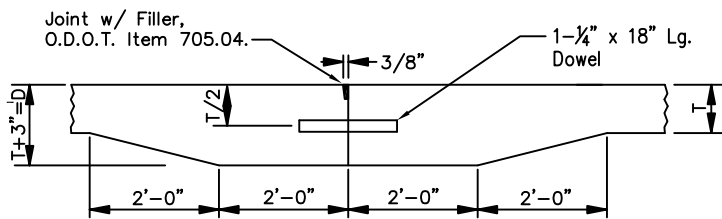
Expansion joint material shall be O.D.O.T. item 705.04 with #8 stone blended in with the hot tar. Pour flush with pavement

EXP. JOINT DETAIL A



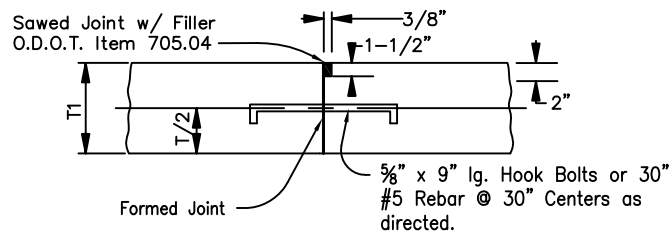
For joint spacing see General Notes

CJ—CONTROL JOINT

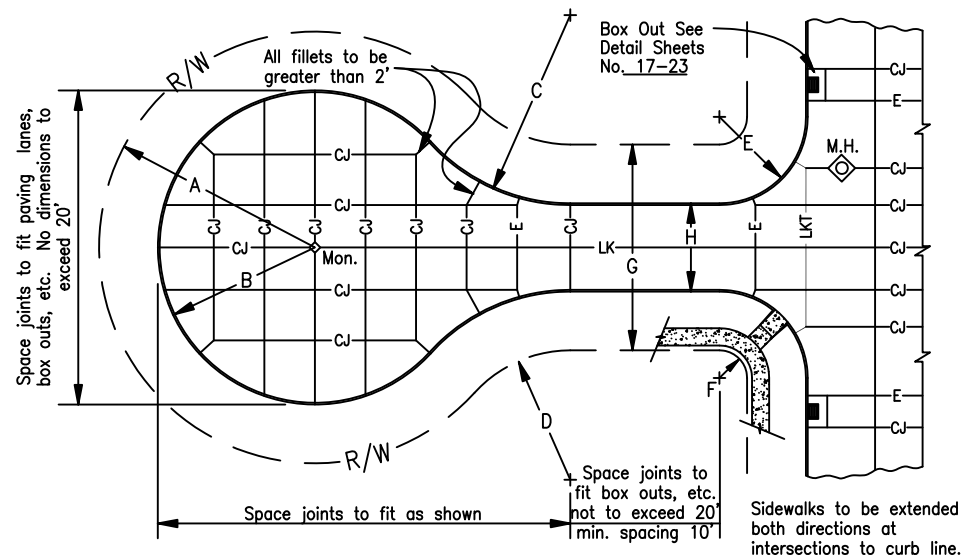


TK—THICKENED EDGE JOINT

To be used at all intersections and at all points where new pavement abuts existing pavement. Dowel bar not required when abutting full depth asphalt roadways.

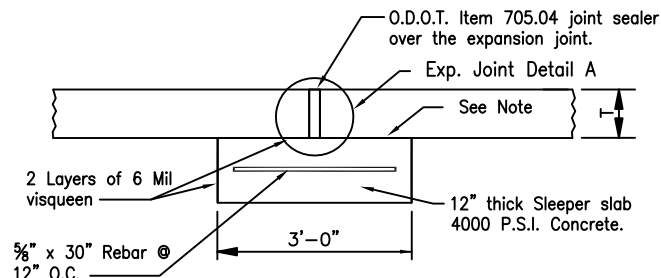


LONGITUDINAL KEY JOINT



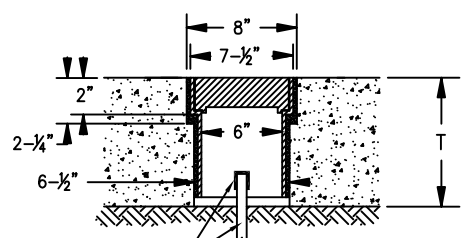
TYPICAL JOINT LAYOUT FOR CONCRETE CUL-DE-SAC & INTERSECTION PAVEMENT

Note: Float finish surface of sleeper slab to be smooth.



Expansion joints shall be used at all intersections, the beginning and end of all curves with less than a 500' radius, at a minimum of every 500' and where designated on the plans by the Engineer.

EXPANSION JOINT



MONUMENT BOX DETAIL

(Not Useable in Landscaped Islands - See Note)

Notes:

Monument Box casting to be EJV #2960 with special order lid. Annular space between casting and pavement to be filled with non-shrink grout per O.D.O.T. 705.20 For alternate monument box see detail sheet No. 12

Installation:

1. Core both openings in pavement.
2. Remove debris and prepare concrete for grout per manufacturers specifications.
3. Coat pavement opening and exterior of casting with grout.
4. Install casting and finish flush with pavement.

JOINT LEGEND

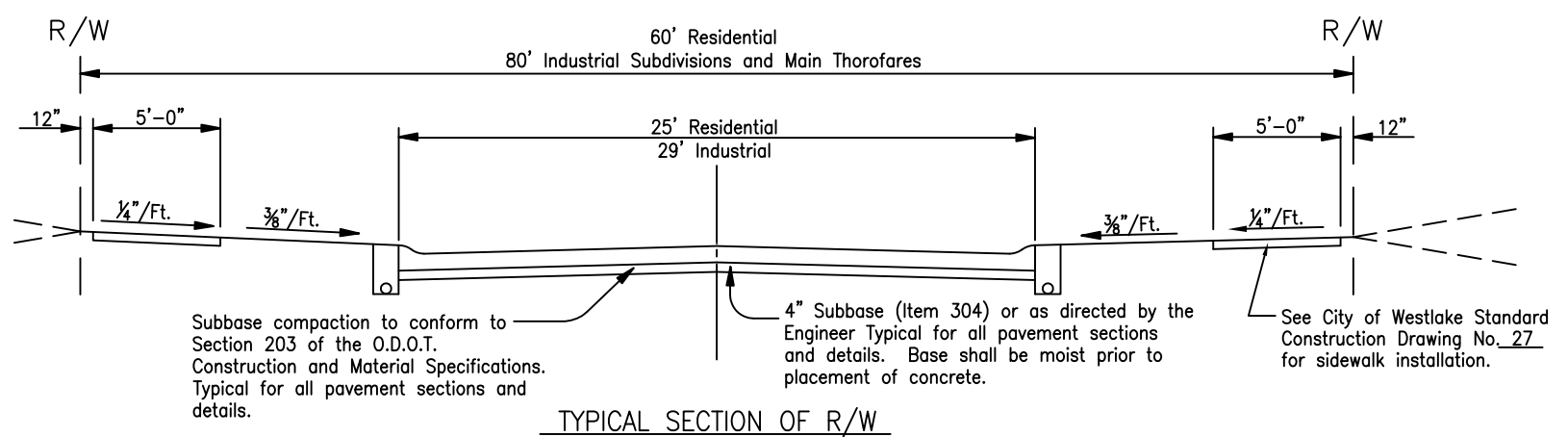
- C Control Joint
- E Expansion Joint
- LK Longitudinal Key Joint
- T Thickened Edge

Use Key Joints, without hook bolts around all manholes.

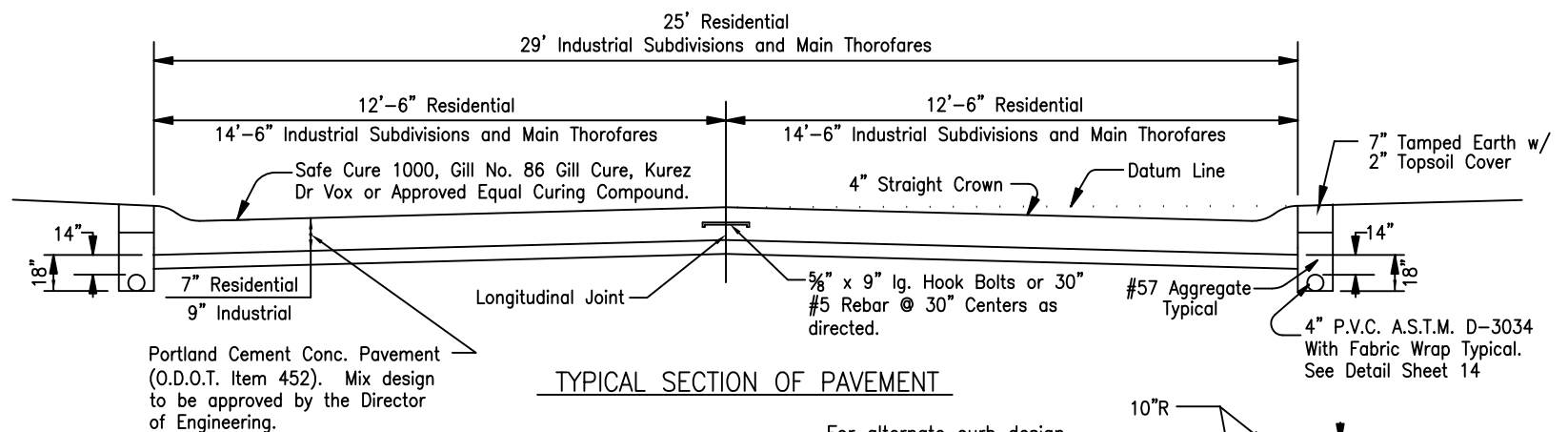
All catch basins and manholes shall be separated from the pavement and curb by Boxing Out.

SCHEDULE OF DIMENSIONS		
	INDUSTRIAL	RESIDENTIAL
A	75.00'	62.50'
B	50.00'	50.00'
C	80.00'	50.00'
D	62.50'	32.50'
E	55.00'	35.00'
F	30.00'	* 25.00'
G	80.00'	60.00'
H	29.00'	25.00'

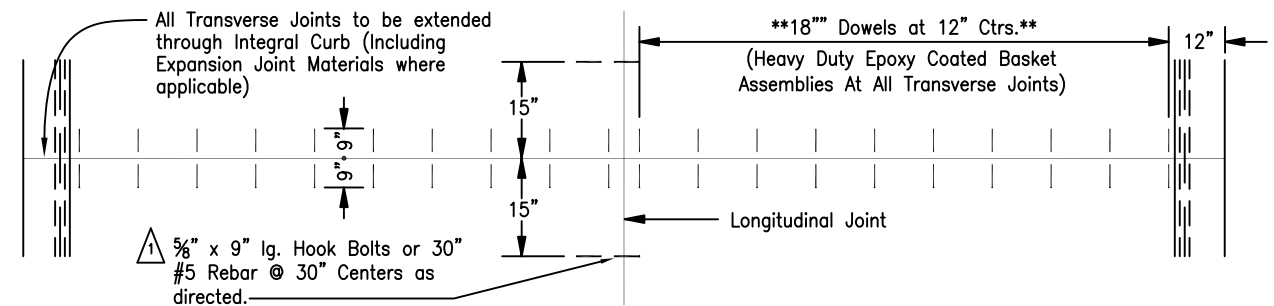
* USE 30' @ ALL INTERSECTIONS WITH MAJOR ROADWAYS



TYPICAL SECTION OF R/W



TYPICAL SECTION OF PAVEMENT



TYPICAL SECTION OF PAVEMENT

GENERAL NOTES:

All material and workmanship shall conform to the latest local & Ohio Department of Transportation Construction and Material Specifications.

Opening of pavement to traffic to be determined by a 600 P.S.I. beam test (job site curing) or 4000 P.S.I. cylinder test (28 days).

One core or cylinder to be taken for each 500 S.Y. of pavement.

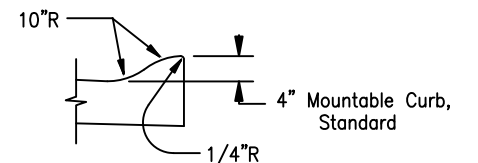
All work to be performed under full time inspection by local representative.

Westlake approved Sodium Silicate Sealer to be applied to pavement per manufacturers specifications 30 days after cure.

Transverse Joint Spacing

- 7" Item 452 Concrete Pavement - 14 Lin. Ft. (Maximum)
- 9" Item 452 Concrete Pavement - 16 Lin. Ft. (Maximum)

For alternate curb design see detail sheet No. 13



Note:

RESIDENTIAL PAVEMENT T = 7" (1" Dia. Dowel)
INDUSTRIAL PAVEMENT T = 9" (1 1/4" Dia. Dowel)

REV No.	DATE	BY	DESCRIPTION
5	1/18/19	MAC	Expansion Joint Detail (Re-issue)
4	11/12	DAH	Cul-De-Sac - Control Joint Modification
3	8/12	DAH	General revision (Re-issue)
2	12/9/08	JJS	Expansion Joint Revision

CITY OF WESTLAKE, OHIO
DEPARTMENT OF ENGINEERING

PAVEMENT & RIGHT-OF-WAY STANDARDS

SCALE: NOT TO SCALE

DATE: DRWN BY: